

TelevisGo

TelevisGo

- **“Embedded” monitoring and control systems**
 - Easy to install
 - Reliability
 - Advanced features of systems integration
 - Licence for 10/30/60/225 devices

TelevisGo
Grocery & warehouse stores



TelevisGo : Benefits

Easy to install – Plug & Play



No MS operating system configuration required

System pre-installed by factory and fully compatible with the MS operating systems

Software utilities factory installed

- Latest version of utility and drivers
- FTP server and VNC utility already installed

Standard hardware and software platform allows an easy support and troubles shooting

Safe data storage – System reliability



No conflicts with other apps or incompatibility with MS OS

A dedicated system discourages an improper use of the PC and the installation of unnecessary software by the end-user

TelevisGo - Features

Dedicate industrial PC with embedded OS

Proven reliability of the SW based on the TelevisCompat with continuous improvements

Energy consumption reports

Dedicate web interface to allows energy consumptions track and report

Off-line configurations

Well trained users can preventively set up the configuration off-line

No PCInterface & Smart Adapter

ModBus and Televis protocol managed on the same serial network. No need of HW license

FTP \ VNC servers pre-installed

Industrial PC already set for a remote access and management

Data and Alarms storage

Detailed view and dynamic graphic charts

TelevisGo - Features

Backup and settings restore

Via web: one file to export to back up the full system setting for an emergency quick restore

Remote upgrade

Via web: Controllers drivers, languages, software, license and users profiles

Hardware “watchdog”

Top reliability thanks to an industrial hardware specifically designed

Scheduler for commands and parameters settings

Easy scheduling for automatic command execution or parameter set

Archives control

Via web: control of the status and size of the archives

High priority to the message notifications

Possible use of the modem as backup in case of DSL line outage

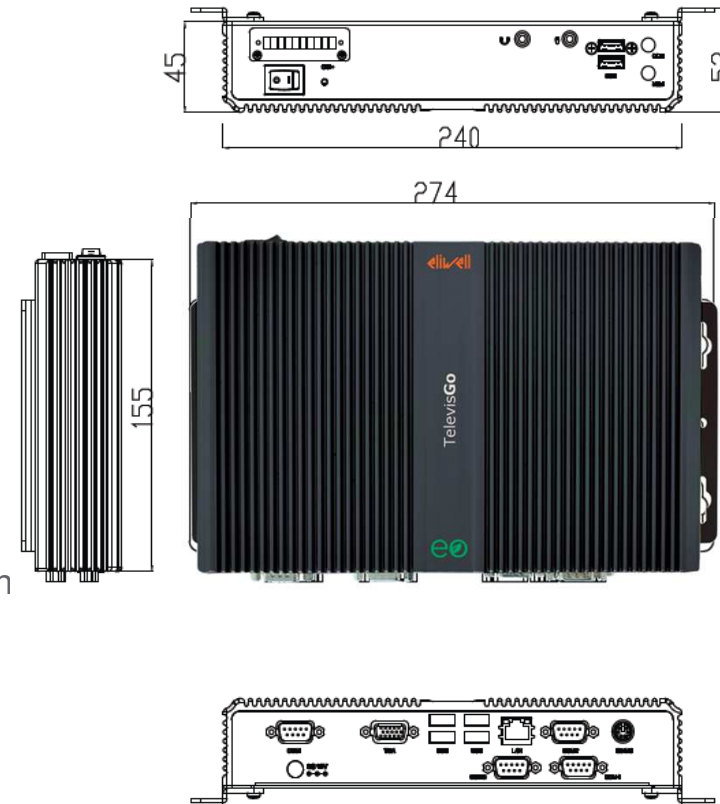
TelevisGo – PC technical specification



CPU	Intel® Atom™ N270 1.6 GHz
Chipset	Intel® 945GSE + ICH7M
System Memory	DDR2 1GB
Display Interface	VGA D-SUB 15 x 1
Storage Device	HDD 2.5" SATA HDD 160GB
Network	LAN 10/100/1000Base-TX x 1
USB Host	USB2.0 x 6
Serial Port	RS-232 x 4
Audio	Line-out, Mic-in
KB/MS	Keyboard x 1, Mouse x 1
Front Power	LED x 1, HDD LED x 1
Power	AC/DC power adapter
Power Consumption	30W
System Cooling	Fanless
Mounting	Desktop/Wallmount
Operating temperature	32°F ~ 113°F (0°C ~ 45°C) (SSD)
Storage Temperature	-4°F ~ 140°F (-20°C ~ 60°C)
Anti-Vibration HD:	0.5 g rms/ 5-500 Hz/random operation
Anti-Shock	15 G with 11 m/sec, operating
MTBF	60,000h
Certification	EMC CE/FCC Class A
OS	Windows 7 Embedded

Dimensions
240mm x 45mm x 155mm (W x H x D)

Weight
2.24 kg



SerialAdapter 232

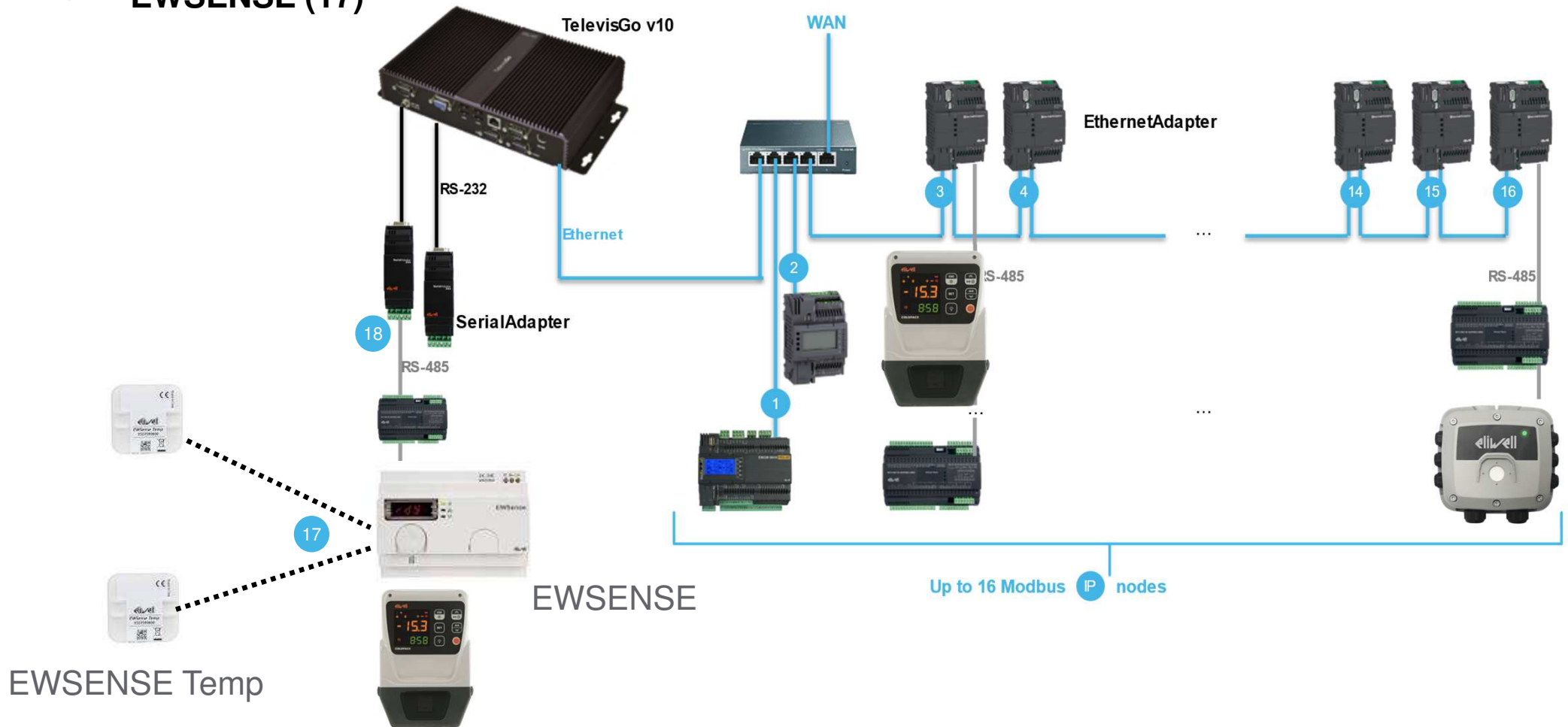
- Compact version (2 DIN) of the RS-485 converter
- RS-485 electrical insulated
- Direct power supply from the PC COM port
- 1 module supplied along with the Televis GO
- Up to 2 SerialAdapter are connectable to the Televis GO

RS-232 →

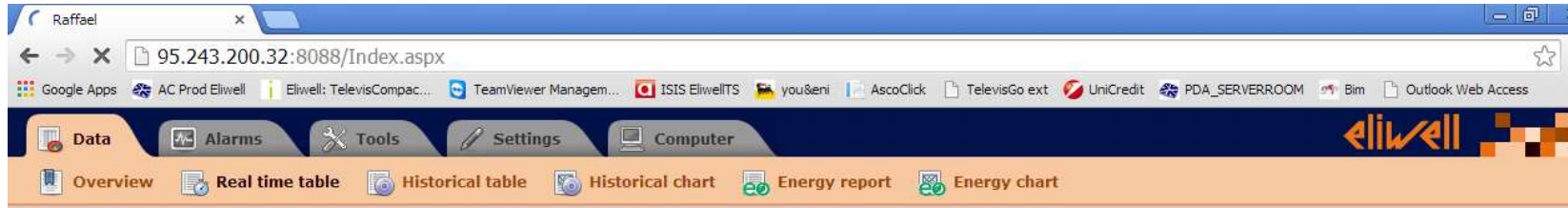


TelevisGo – Connexion

- RS485 (18)
- Modbus/TCP (1 – 2)
- EthernetAdapter (3 à 16)
- EWSENSE (17)



Real Time



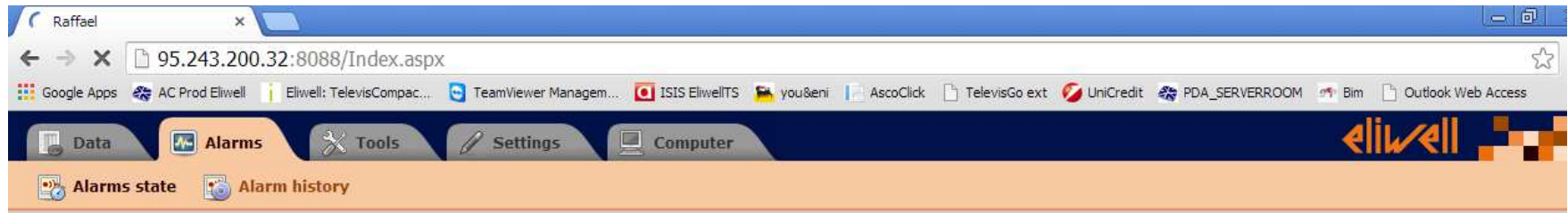
Data » Real time table

Expand all Collapse all Cancel filters Print

Serial Adapter (COM1) - 14 devices, 266 resources - 1m

Anticella TN	Cella BT Abbattimento	Centrale TN
Ambiente 4.7 °C	Ambiente -18.0 °C	Suction probe circuit 1 -17.0 °C
Temperature alarm probe 1 4.7 °C	Temperature alarm probe 1 -18.0 °C	Suction probe circuit 1 3.50 bar
Defrost probe 1 4.5 °C	Defrost probe 1 -18.1 °C	Suction setpoint circuit 1 -20.0 °C
Defrost probe 2 4.3 °C	Defrost probe 2 -17.6 °C	Suction setpoint circuit 1 3.14 bar
Evaporator fan probe 4.5 °C	Evaporator fan probe -18.1 °C	Suction setpoint offset circuit 1 0.0 °C
Control setpoint value 1 4.0 °C	Control setpoint value 1 -20.0 °C	Discharge probe 37.2 °C
Valve 1 overheating * *	Valve 1 overheating * *	Discharge probe 17.5 bar
Dewpoint remote value 1 0.0 °C	Dewpoint remote value 1 0.0 °C	Discharge setpoint 40.0 °C
Analogue input (display) 1 4.7 °C	Analogue input (display) 1 -18.0 °C	Discharge setpoint 18.6 bar
Stand-by mode Off	Stand-by mode Off	No. COMP circuit 1 2
Compressor 1 On	Compressor 1 On	Power delivered by circuit 1 33 %
Defrost 1 Off	Defrost 1 Off	Number of fans 4
Defrost 2 Off	Defrost 2 Off	Power generated by compressor 1 0 %
Evaporator fans On	Evaporator fans On	Operation hours compressor 1 81
Alarm Off	Alarm Off	Power generated by compressor 2 0 %
Light Off	Light Off	Operation hours compressor 2 81
Deep Cooling Off	Deep Cooling Off	Power of compressor piloted by the inverter, suction section 1 100 %
Frame heaters On	Frame heaters On	Compressor inverter running hours circuit 1 121
Reduced set-point Off	Reduced set-point Off	Fan running time 1 42
Energy saving Off	Energy saving Off	Fan running time 2 42
Door Off	Door Off	Fan running time 3 41
Number of devices recognized in the LAN 0	Number of devices recognized in the LAN 0	Fan running time 4 41
Anticella TN EEV1	Cella BT Abbattimento EEV1	Selection Compressor On

Alarms



Alarms » Alarms state

View
Confirm

Expand all
Collapse all
Cancel filters

Filter devices

Description

Alarms filter

Active alarms

Confirmed alarms

Show helpers

Show table header

Legend

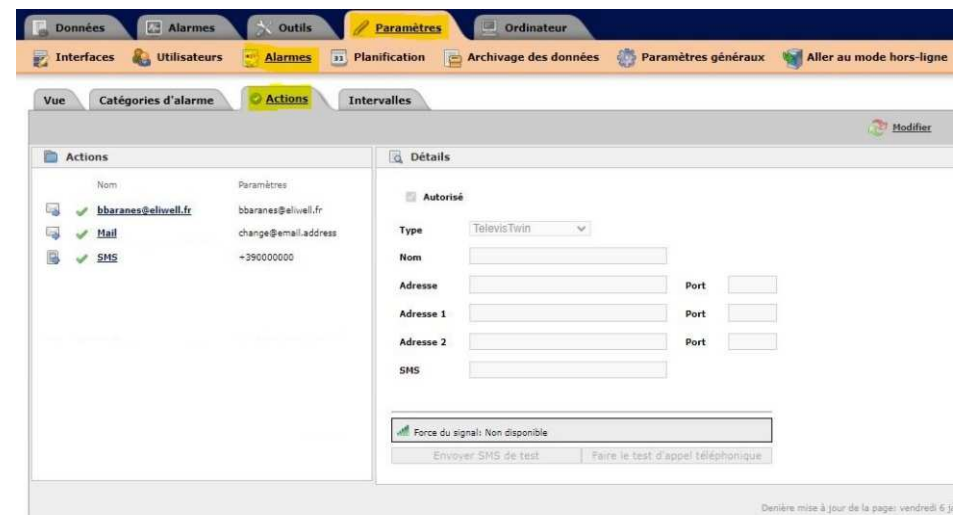
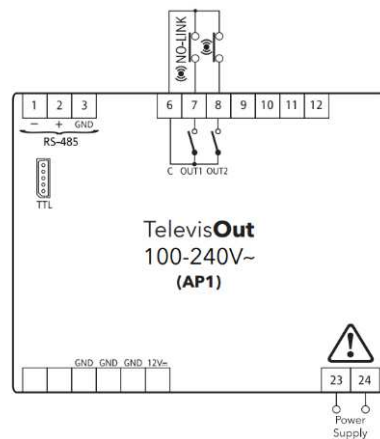
Anticella TN EEV1	No link	7 hours
Anticella TN EEV2	No link	23 hours
Cella TN Grande EEV1	No link	9 hours
Cella TN Grande EEV2	No link	20 hours
Cella BT Abbattimento EEV2	No link	8 hours
Cella BT EEV2	No link	21 hours

Page last update on: 28 July 2014 - 11:45:54

Alarms

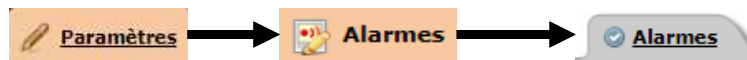
There are 3 way to managed alarms:

1. Digital output by Televis Out



Alarms

2. Send Alarms by EMAIL



Configuration serveur email

e-mail - Serveur - Adresse

e-mail - Serveur - Port [1 ... 65535]

e-mail - Serveur - Adresse de l'expéditeur

e-mail - Serveur - Authentification requise

e-mail - Compte - Nom Copier adresse

e-mail - Compte - Mot de passe

Accepter le certificat non valide lorsque le protocole SSL est utilisé par le serveur de messagerie électronique

Timeout du serveur de messagerie électronique [1 ... 10000]

Le protocole SSL est utilisé par le serveur de messagerie électronique

Données Alarms Outils Paramètres Ordinateur

Interfaces Utilisateurs Alarmes Planification Archivage des données Paramètres généraux Aller au mode hors-ligne

Vue Catégories d'alarme Actions Intervalles

Modifier

Actions		Détails	
Nom	Paramètres	Autorisé	
bbaranes@eliwell.fr	bbaranes@eliwell.fr	Type	TelevisTwin
Majl	change@email.address	Nom	<input type="text"/>
SMS	+390000000	Adresse	<input type="text"/> Port <input type="text"/>
		Adresse 1	<input type="text"/> Port <input type="text"/>
		Adresse 2	<input type="text"/> Port <input type="text"/>
		SMS	<input type="text"/>

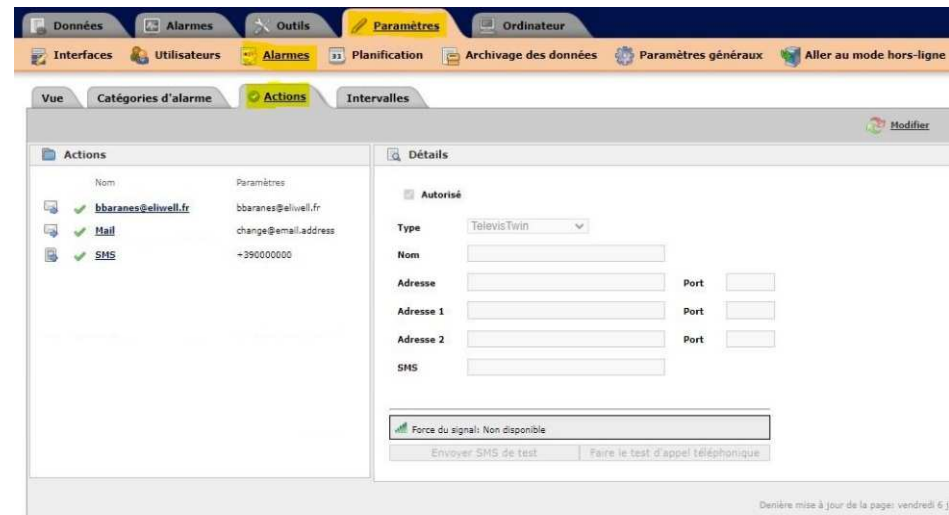
Force du signal: Non disponible

Envoyer SMS de test Faire le test d'appel téléphonique

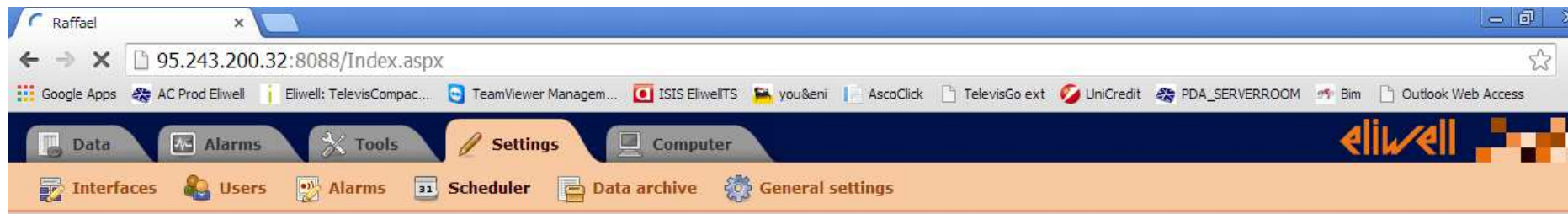
Demière mise à jour de la page: vendredi 6 j

Alarms

3. Send SMS by GSM Modem on COM 3 of the Televis Go



Scheduler



Settings » Scheduler » Actions

View
Actions
Print

Add
 Remove
 Edit
 Save
 Cancel
 Preview

Actions

Name	Type
Report	

Action

Name:

Type:

Period:

Folder:
 Export to CSV
 Export to PDF
 Print

Email recipients:

Filters

Profile:

Schedule

Type:

Starting date:

Period:

Execution times

Time:

Retry duration:

Retry interval:

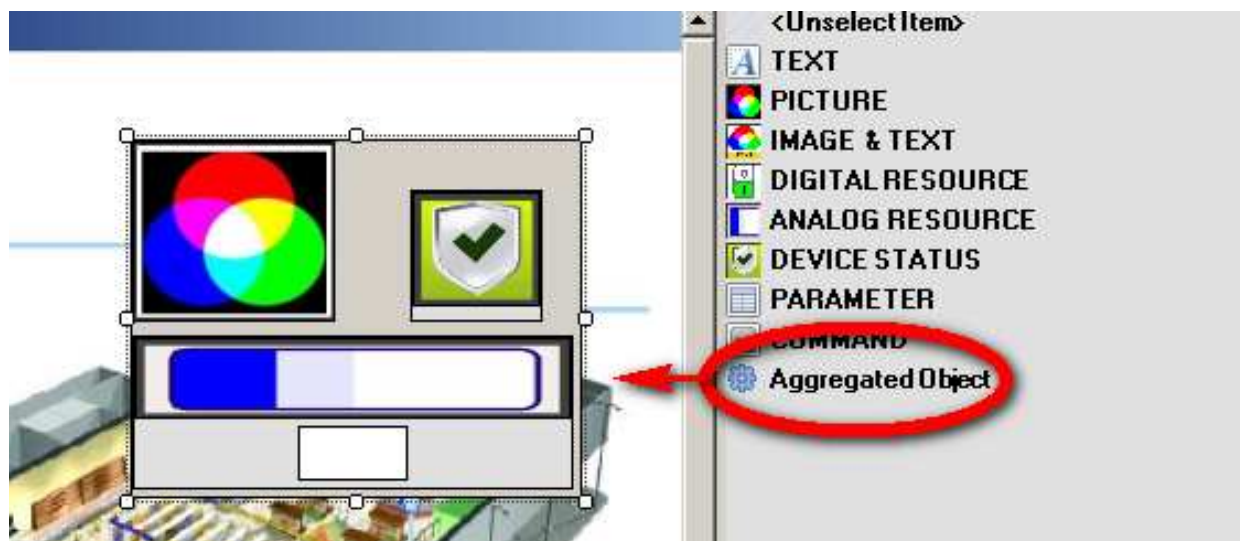
Page last update on: 28 July 2014 - 11:46:34

TelevisGo graphical interfaces

- Synoptic layout designer tool



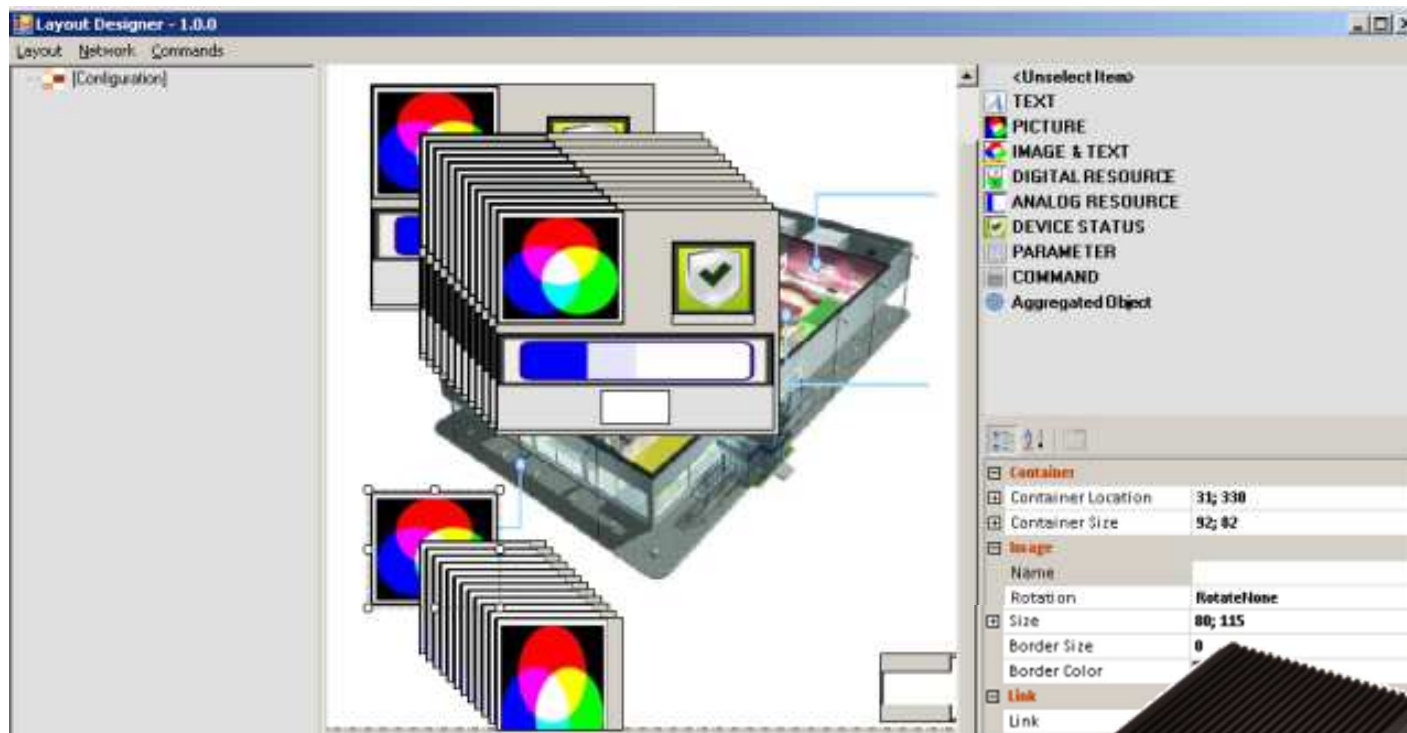
TelevisGo graphical interfaces



- It is possible to group objects together and save them for an easy further re-use



TelevisGo graphical interfaces



- The drawing process has been speed-up thanks to the “dru&drop” and the “copy&paste” procedure



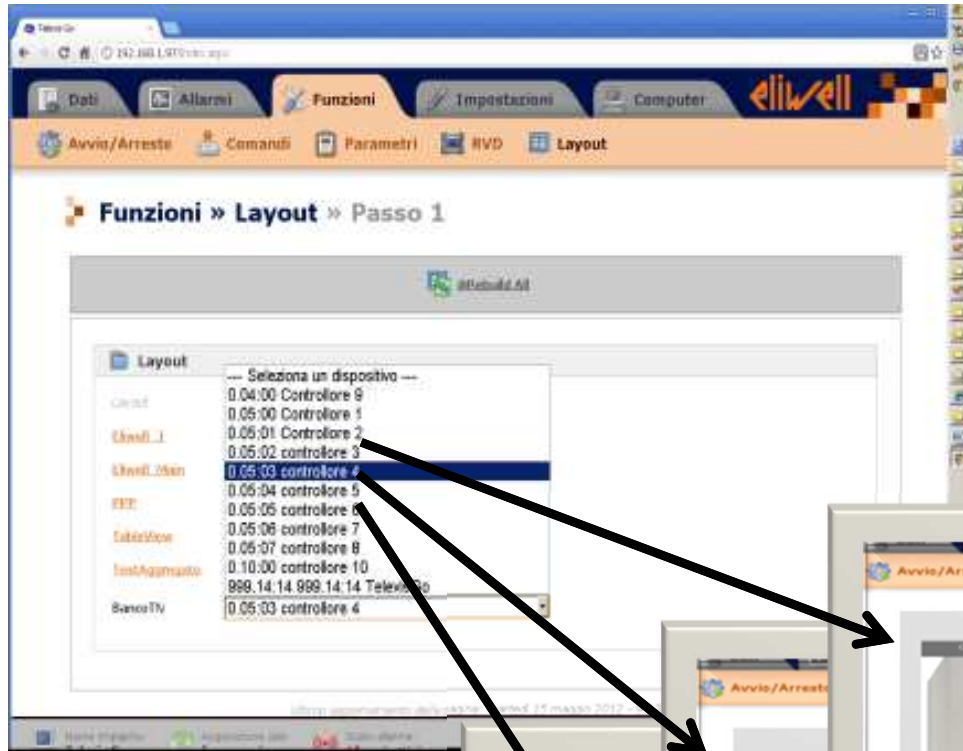
TelevisGo graphical interfaces

- The smart “Copy&Paste” of objects groups, allows to create quickly views of tables with data, commands, and parameters



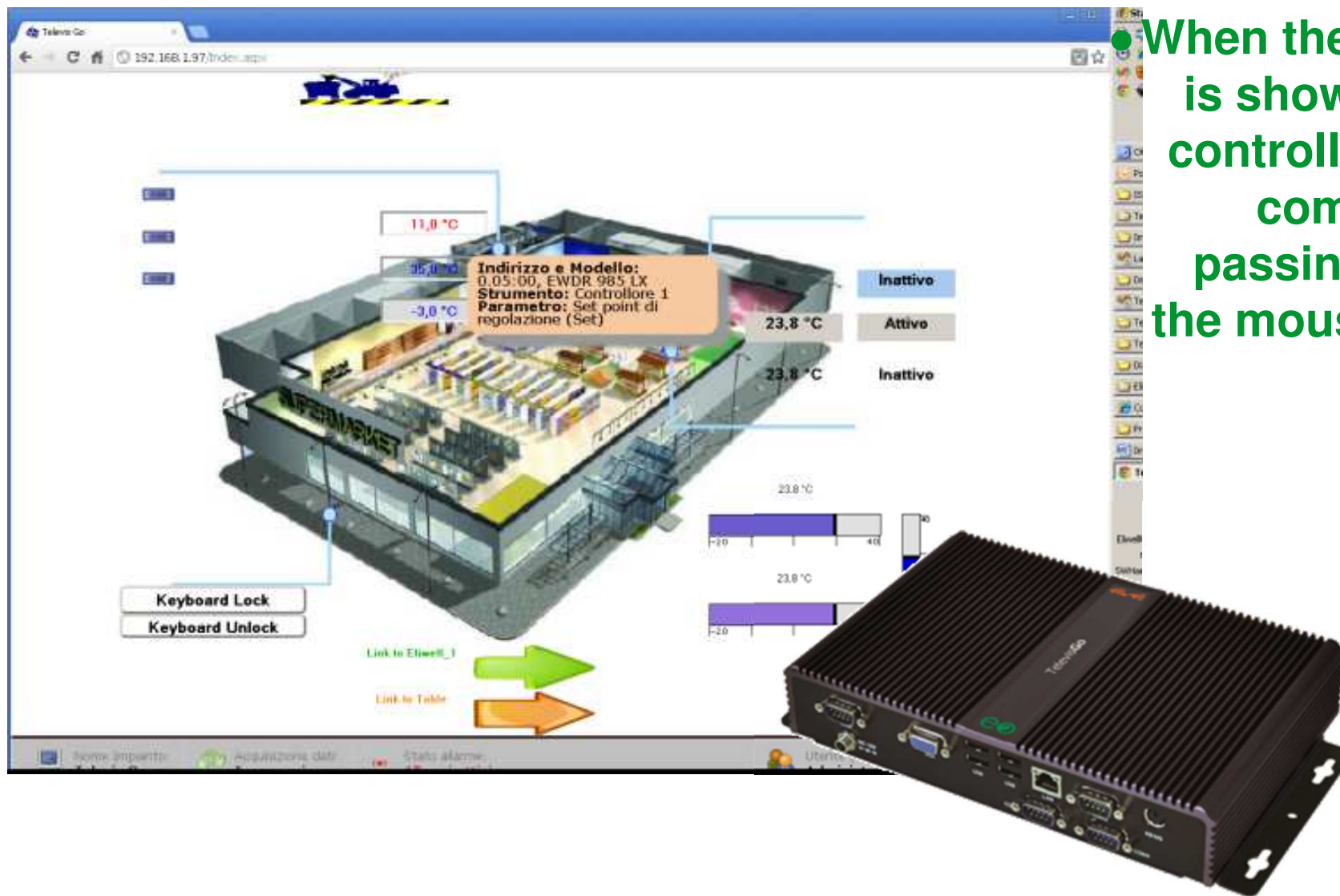
TelevisGo graphical interfaces

- A graphic page can be drawn for a single controller. The you can duplicate the page to be assigned to further controllers

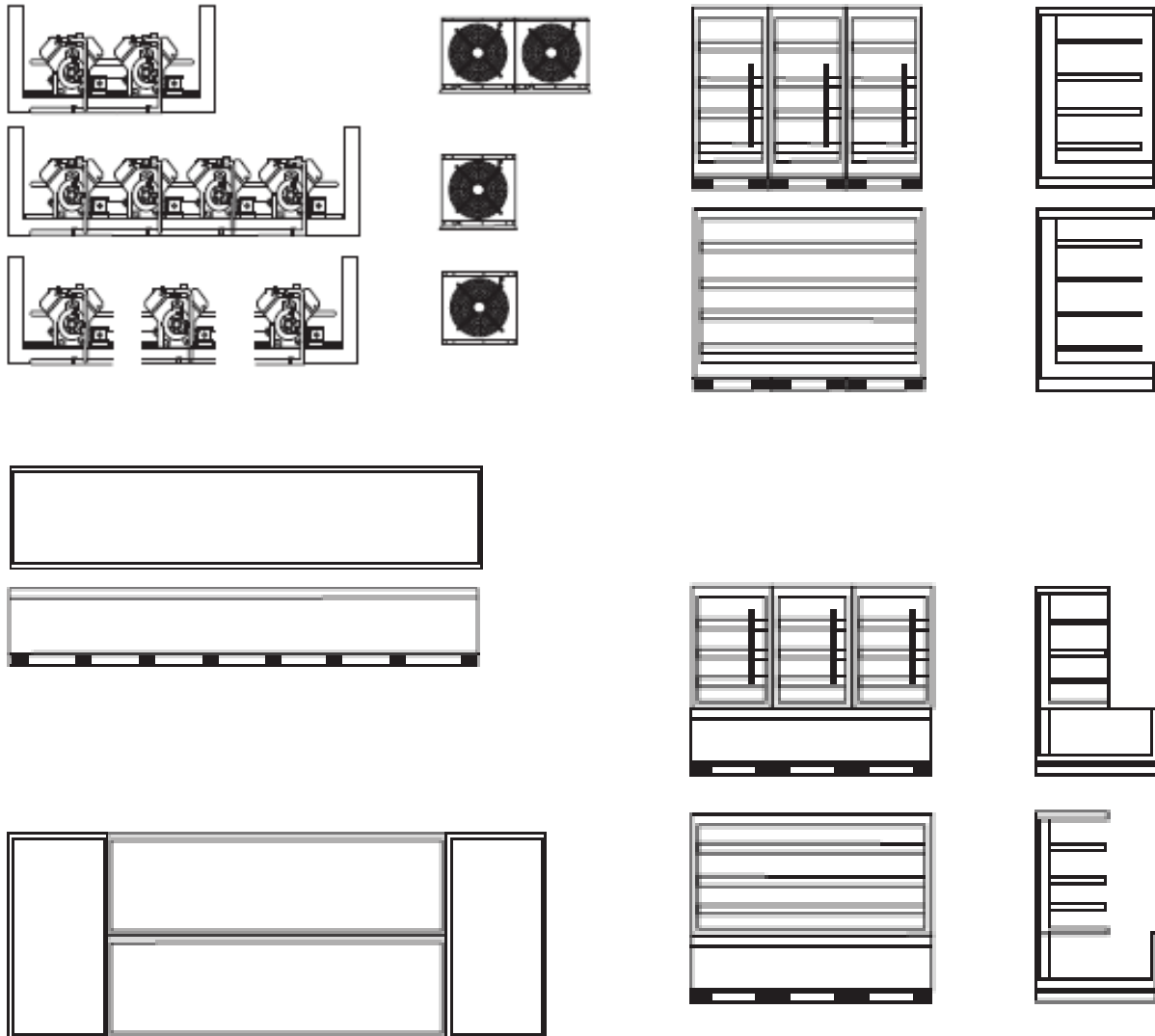


TelevisGo graphical interfaces

- When the drawing is shown, all the controller details come up just passing by with the mouse cursor



TelevisGo graphical interfaces



- A library of common icons used is available and easily expandable



Thank you

